

dreamtown



# 416 W DEMING PLACE #4

4 BED | 4 BATH | LINCOLN PARK

JS

JILL SILVERSTEIN



dreamtown

---

4 BED | 4 BATH | PENTHOUSE

---

This sleek and functional 3,426 square foot, full floor East Lincoln Park penthouse residence is situated on pristine, tree-lined Deming Place, just steps from the park. Boasting high ceilings and floor-to-ceiling windows with exceptional views, this rare and magnificent home in a boutique building is being offered for resale for the first time since its 2014 construction from the renowned Larry Booth/Ogden Partners. The gourmet, open-concept kitchen includes Waterfall quartz countertops, and high-end appliances by Sub, Wolf, and Bosch. Enjoy the comforts of 4 welcoming bedrooms as well as 4 full baths with clean marble finishes, steam showers, and heated floors. The residence also features dark hardwood floors throughout, multiple fireplaces, a large balcony, significant storage space, and 3 parking spots with direct elevator access to unit.

In addition to the glorious interiors the private, elite 3,000 square-foot roof deck is a true gem. Among its many attractive features are 4 fire pits, easy-to-clean Epay wood, waterfall, porcelain tile, shower, Astro pet turf, television and surround-sound capability, and automatic lights and sprinklers. The outdoor chef's kitchen comes with a dual kegerator, grill, and refrigerator. This outstanding property is also notable for its low assessments!

JS

JILL SILVERSTEIN



KITCHEN AND LIVING AREA





MASTER SUITE

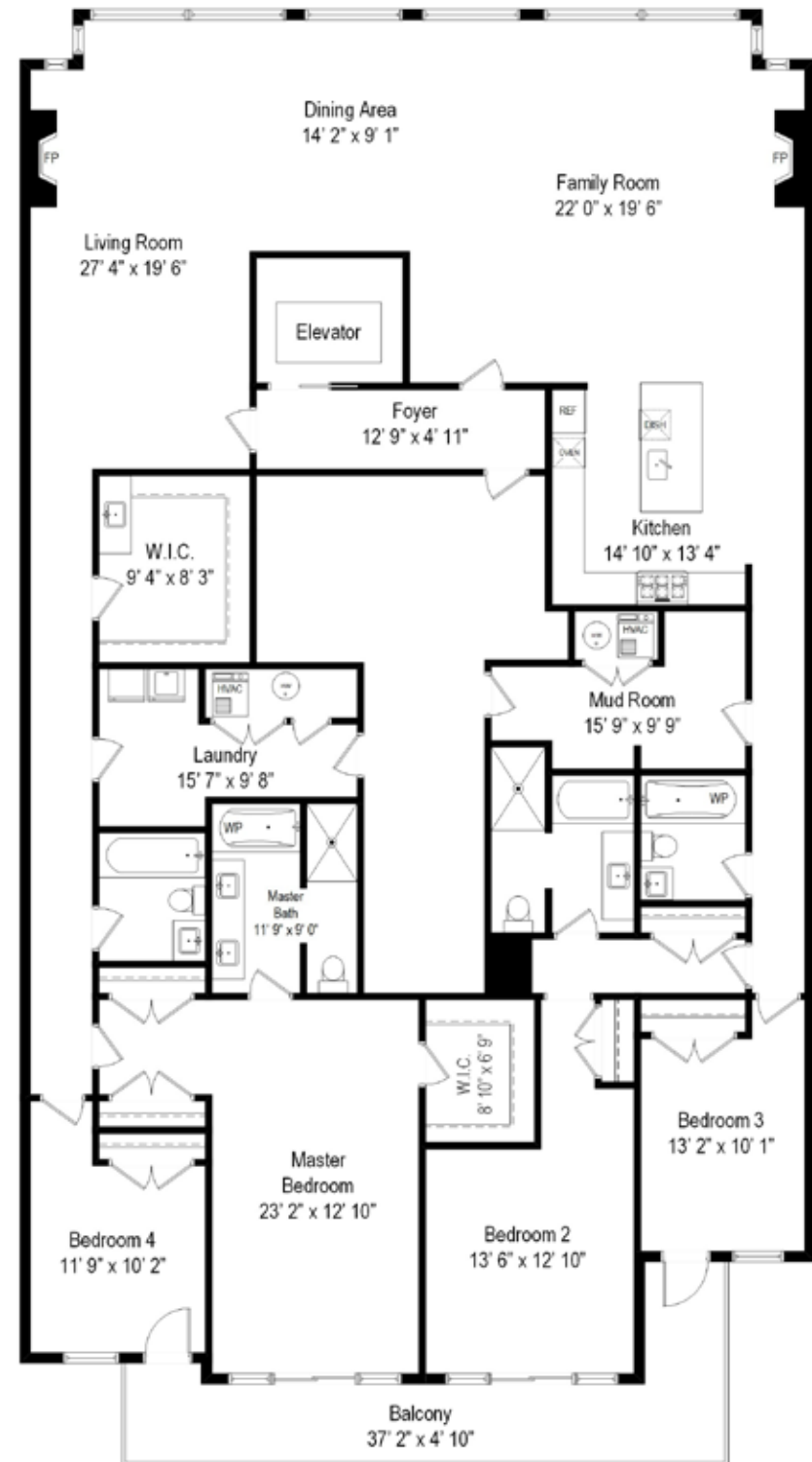




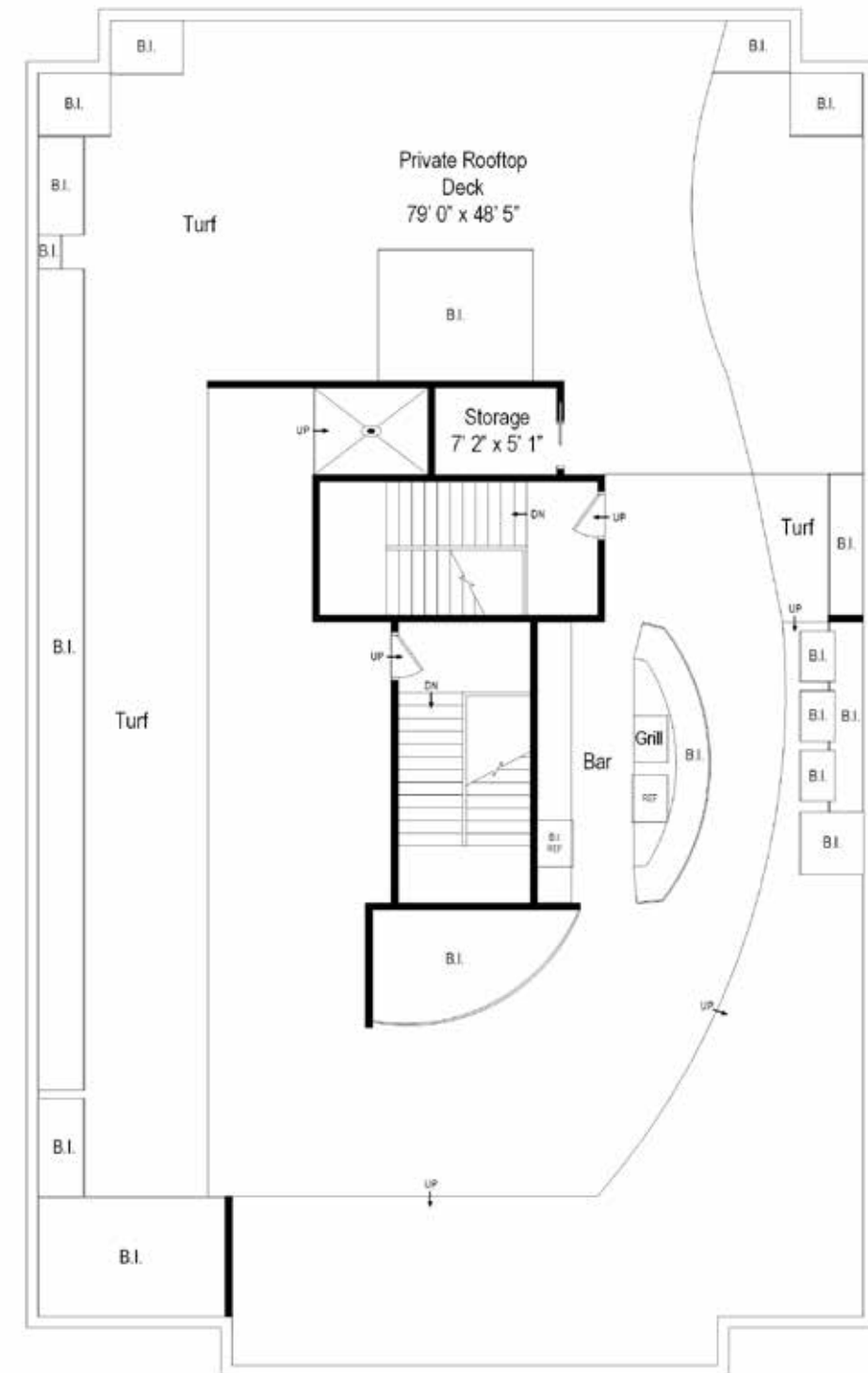
LIVING ROOM & BEDROOMS



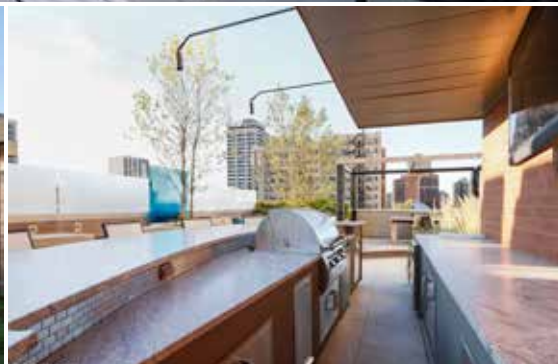
PENTHOUSE MAIN LEVEL



PENTHOUSE ROOFTOP







JILL SILVERSTEIN

312.877.1784

Jill@dreamtown.com

DreamTown.com



JILL SILVERSTEIN

dreamtown

1950 N. SEDGWICK | DREAMTOWN.COM



© 2016 Dream Town Realty, Inc. All information subject to errors, omissions, prior sale, changes, or withdrawal without notice. 🏠